

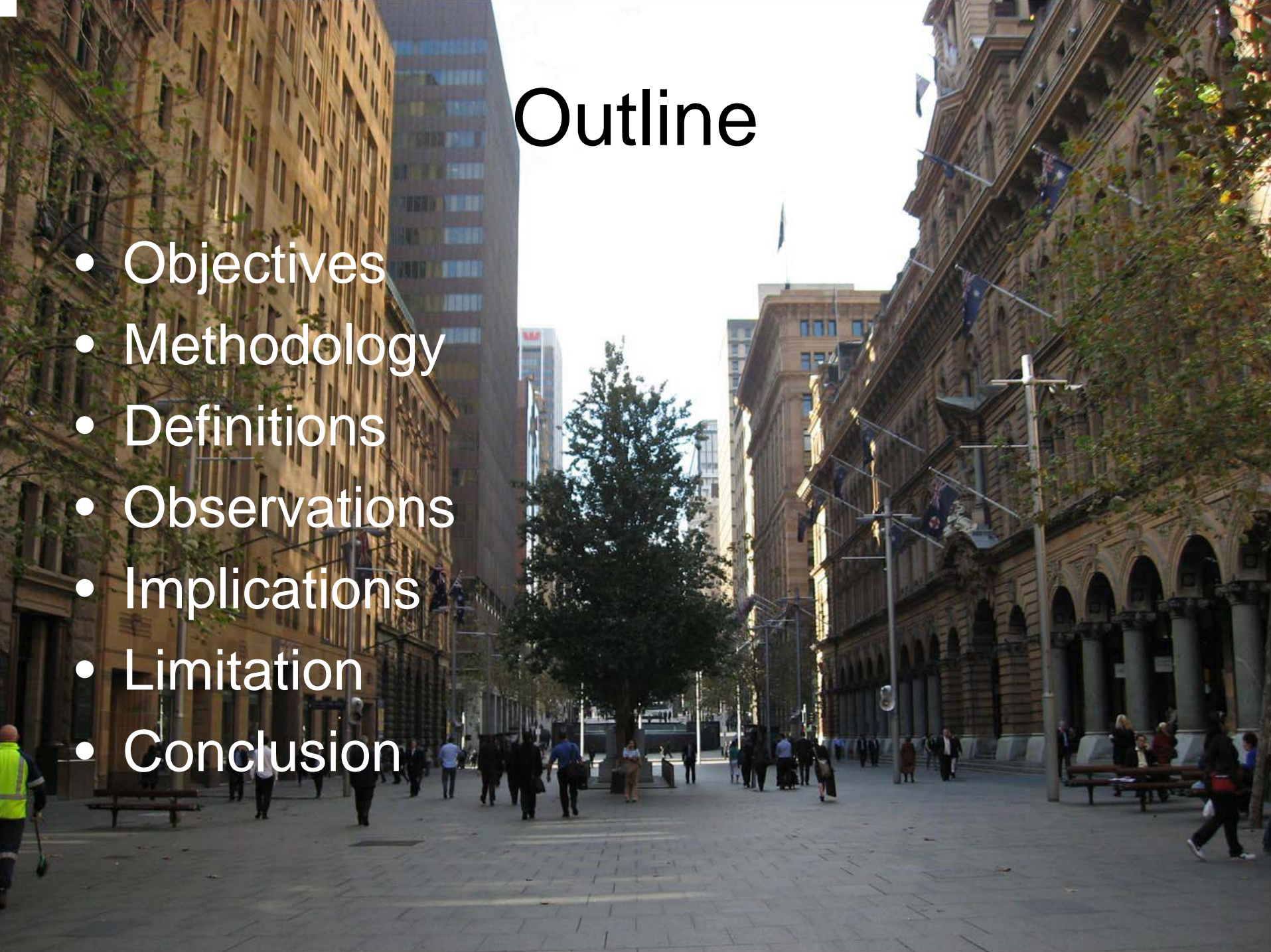
A wide, pedestrian-friendly city street with historic buildings, trees, and people walking. The street is paved with light-colored stone tiles and is flanked by tall, multi-story buildings with classical architectural features like arched windows and columns. There are several trees along the sidewalks, and many people are walking in both directions. The sky is bright and clear.

The Streetscape and Pedestrian Environment

Group A

Outline

- Objectives
- Methodology
- Definitions
- Observations
- Implications
- Limitation
- Conclusion

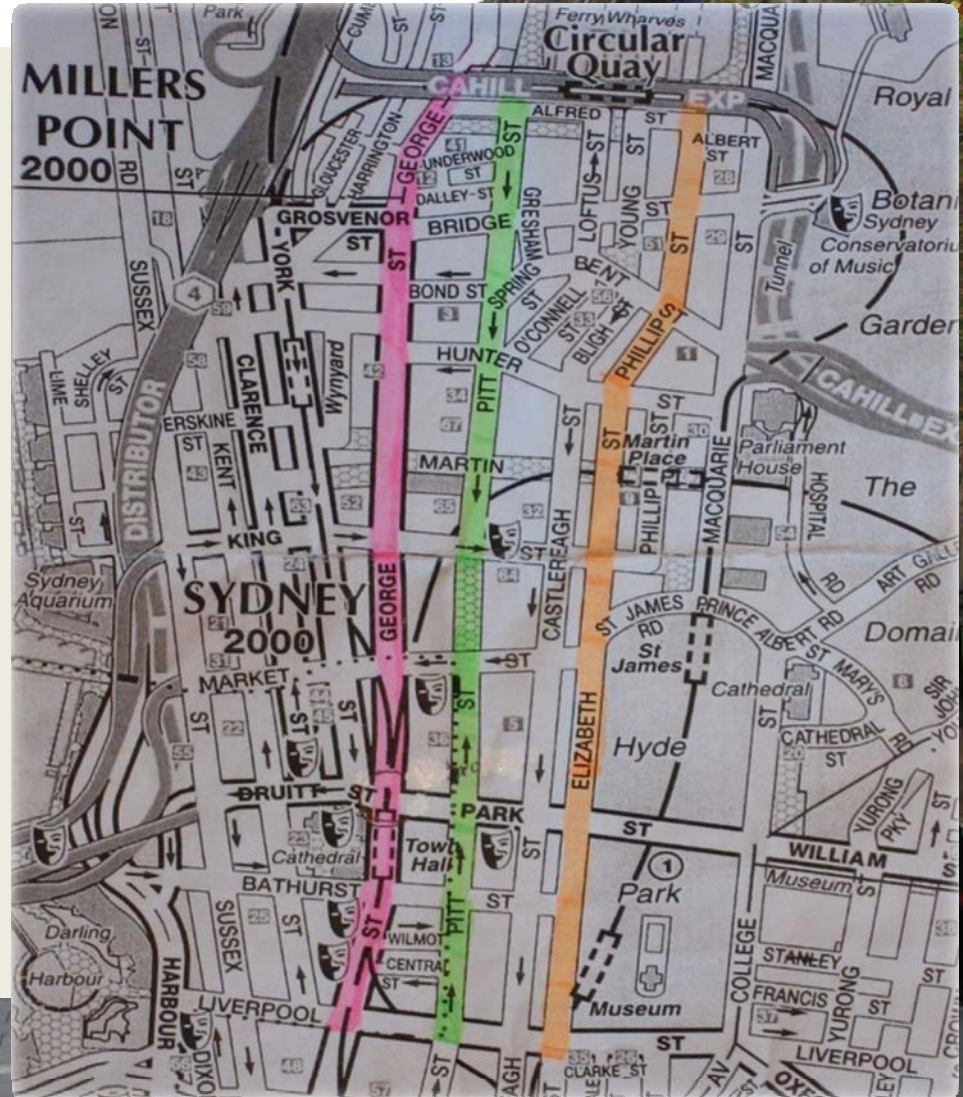


Objectives

- Streetscape
 - street activities, facilities, amenities and design of the streets
- Pedestrian environment
 - Facilities for disabled
 - Connectivity, e.g. elevated walkways and subways
 - Use of underground space
 - Pedestrianization
 - Covering
- Transport and mobility
 - Accessibility, user-friendliness, facilities

Methodology

- On-site observation
 - George Street
 - Pitt Street
 - Elizabeth Street
- Interviews (transport)



Definitions

- Streetscape
 - Urban design: design of the roads and other attributes
- Pedestrian environment
 - Focus on the safety, comfort and user-friendliness of pedestrians



Streetscape



Street amenities



Streetscape

- Street amenities

Street amenities	George St.	Pitt St.	Elizabeth St.
Post Box	8	5	6
Telephone Cell (pairs)	18	17	12
Seat	34	20	18
Rubbish bin	62	47	23
Toilet	1	1	2
Water fountain	0	0	2
Bicycle parking	28	2	21

Streetscape

- Trees

Street	No. of trees
George Street	113
Pitt Street	99
Elizabeth Street	199

- 68% of the trees are *Firminia Simplex*
(deciduous species)

Streetscape



- Trees functions
 - Aesthetic value
 - Shading effect
 - Moderate the micro-climate

- Activities





Pedestrian environment



Pedestrian environment

- Facilities for disabled



Pedestrian environment

- Connectivity



Pedestrian environment



Pedestrian environment

- Use of underground space
- Commercial use dominant
 - Retail shops
 - Fast food shops & coffee shops
 - Hair salons
 - Shops for newspapers & magazines
- Connect to transportational facilities
- Many exits connecting landmarks



Pedestrian environment

- Awning



Pedestrian environment

- Pedestrianization
 - Martin Place, Pedestrian area (Pitt Street)





Implications

Strengths

- High varieties of street amenities
- Good choice of tree species
- High diversity of street activities



Weaknesses

- The sound of traffic light is not clear
- The uneven road surface



A wide-angle photograph of a city street, likely in Sydney, Australia, showing a mix of historic and modern architecture. The street is paved with cobblestones and has several trees. People are walking on the sidewalks. A large white rectangular box is overlaid in the center of the image, containing the text "Transport and Mobility".

Transport and Mobility

Transport and Mobility

Transportation modes:

- Railway (CityRail, Monorail, LightRail)
- Buses
- Taxis
- Ferries

Railway (CityRail)

Satisfactory Level	Percentage	
	Local	Tourist
Good	-	-
Average	50	33.3
Poor	-	16.7

Fine satisfactory level

Signs Clarity	Percentage	
	Local	Tourist
Clear	-	-
Average	33.3	33.3
Confusing	16.7	16.7

Clear signs on average

Railway (Monorail)

Satisfactory Level	Percentage	
	Local	Tourist
Good	100	100
Average	-	-
Poor	-	-

Signs Clarity	Percentage	
	Local	Tourist
Clear	100	100
Average	-	-
Confusing	-	-

Excellent satisfactory level and signs clarity

Bus

Satisfactory level	Percentage
Good	41.7
Average	41.7
Poor	16.6

Good to average satisfactory level

Signs clarity	Percentage
Clear	100
Average	-
Confusing	-

Excellent signs clarity

Ferries

Satisfactory level	Percentage
Good	90
Average	10
Poor	-

Good satisfactory level

Signs clarity	Percentage
Clear	100
Average	-
Confusing	-

Excellent signs clarity

Implication


- High satisfactory level, except CityRail (complicated routes)
- Clear signs and directions
- Wide range of coverage
- Environmentally-friendly



Conclusion

- User-friendliness
- Safety
- Comfort
- Enjoyment





THE END
~THANKS~
>3<